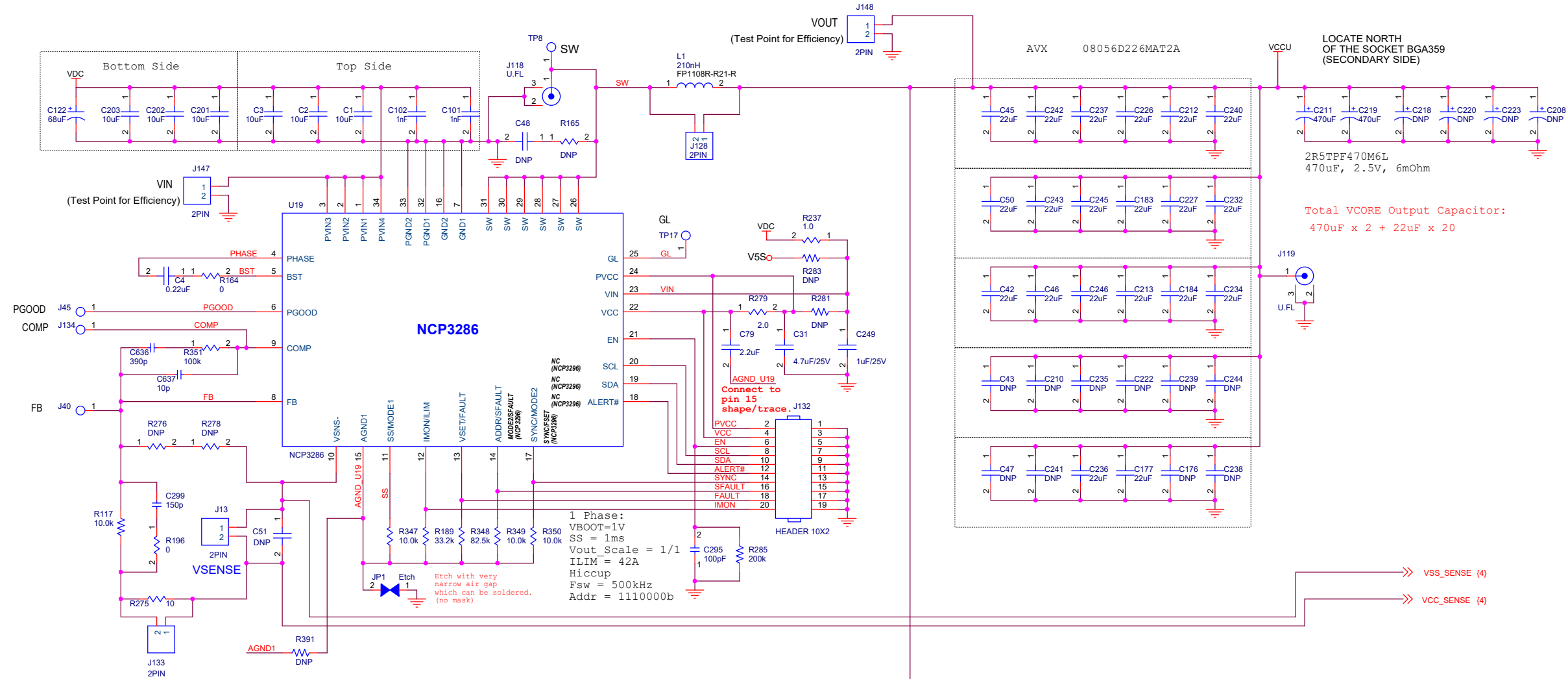




ON Semiconductor®

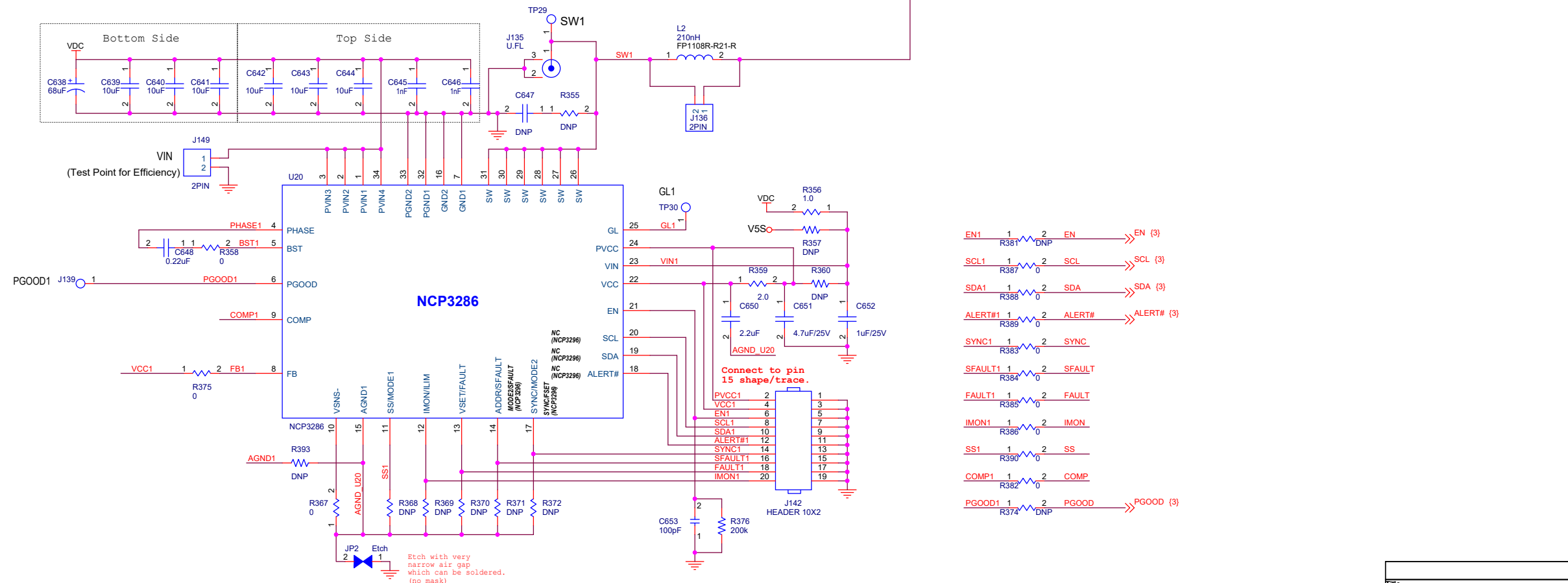
**NCP3286/96/97 EVB
IMVP8 BGA359 Socket VRTB
Rev 0**

Title		
NCP3286/96/97 EVB with IMVP8 Socket		
Size	Document Number	Rev
	NCP3286	0
Date:	Friday, May 29, 2020	Sheet 1 of 4



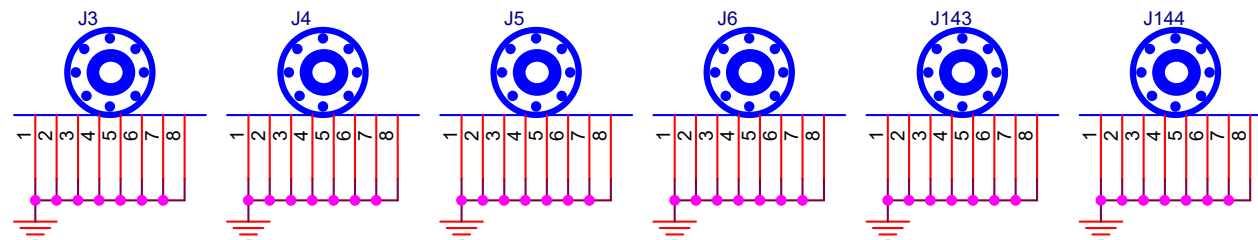
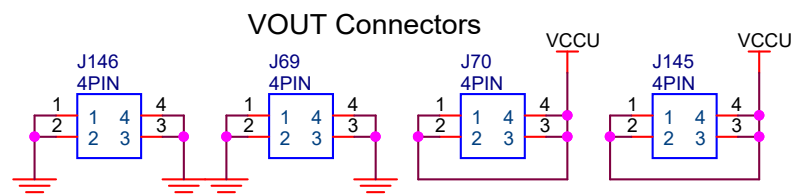
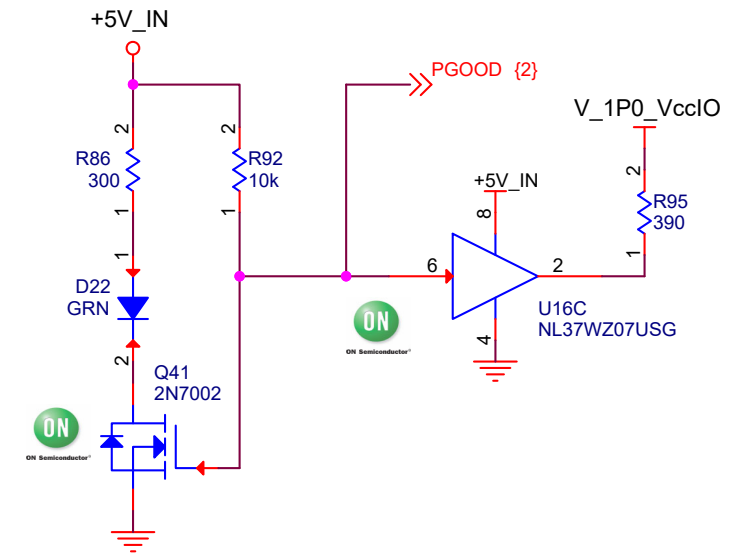
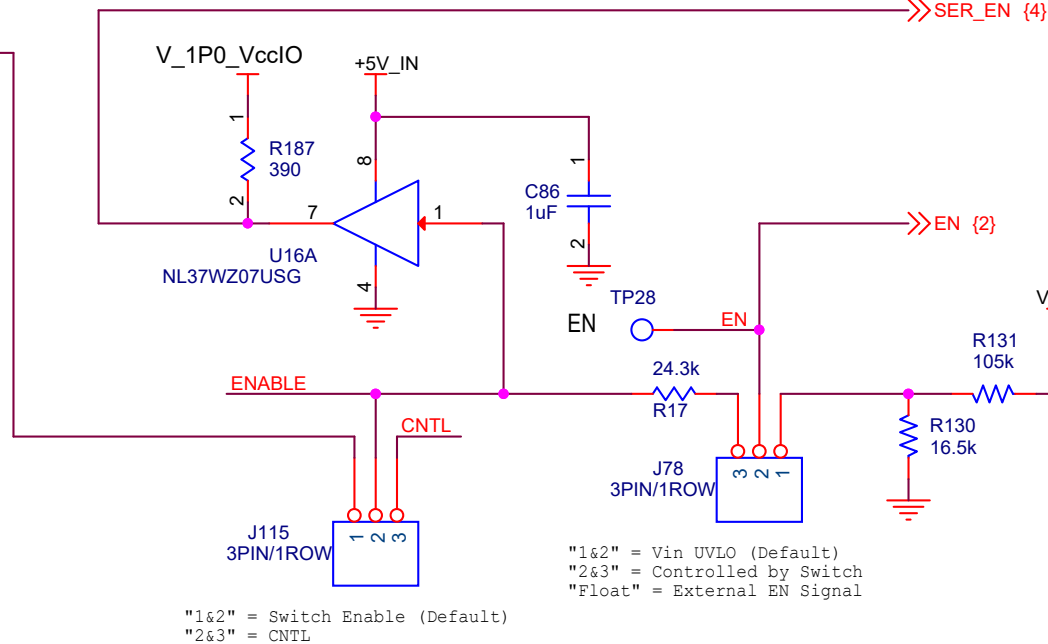
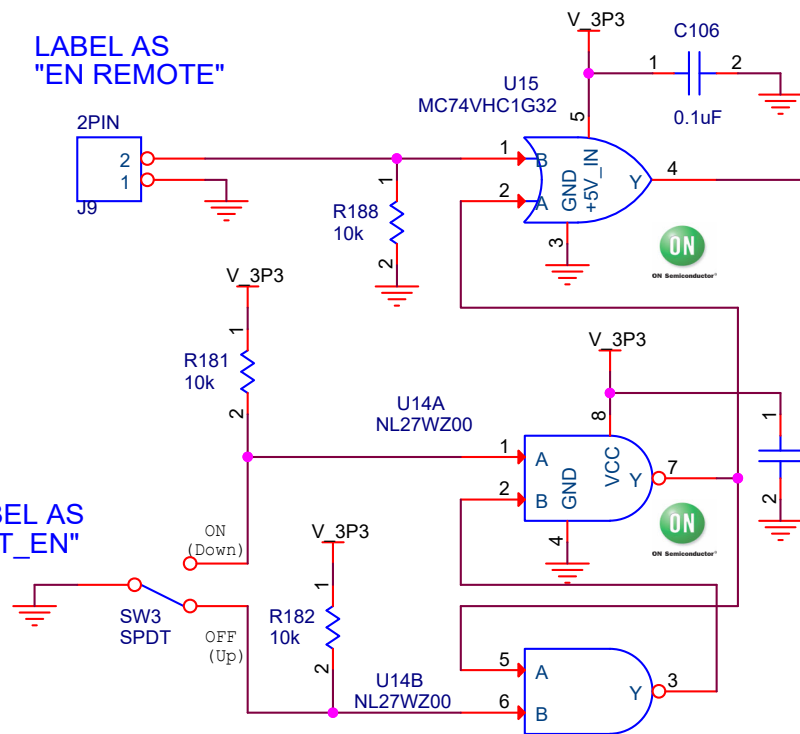
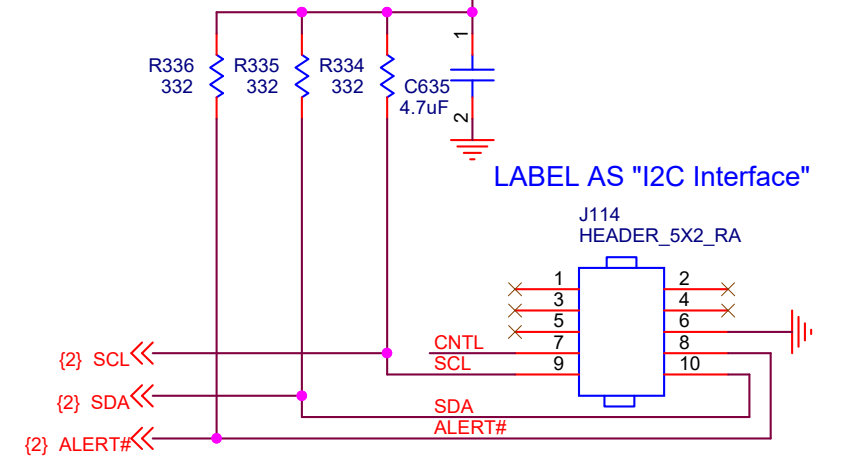
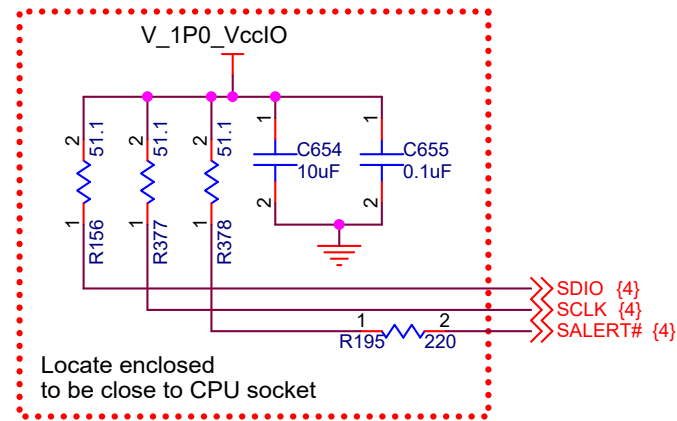
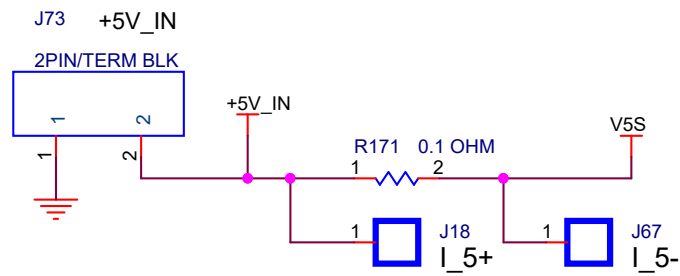
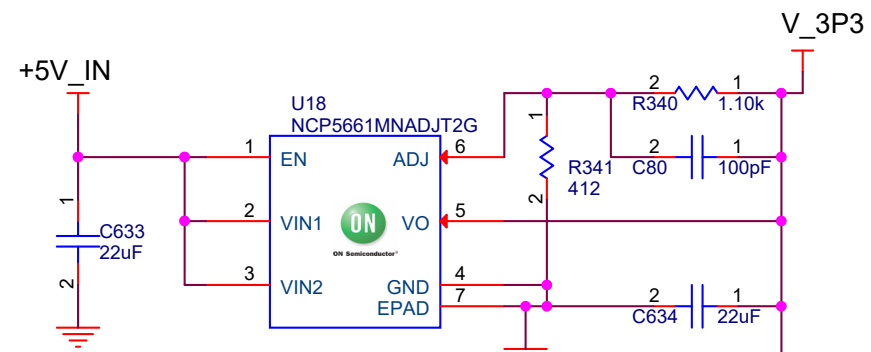
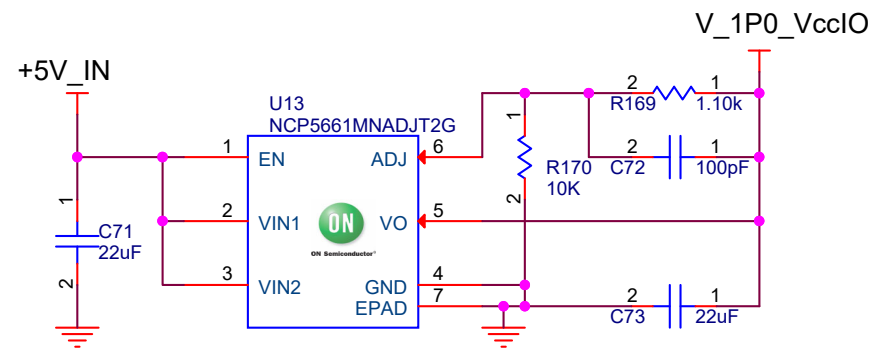
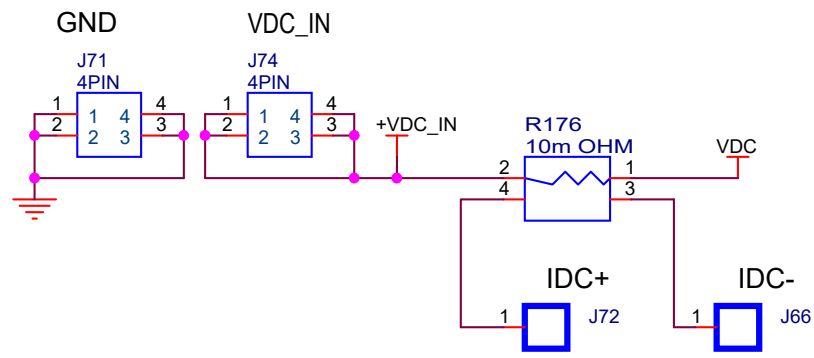
Total VCORE Output Capacitor:
470uF x 2 + 22uF x 20

VSS_SENSE (4)
VCC_SENSE (4)



- EN1 1 R381 2 EN >>> EN (3)
- SCL1 1 R387 2 SCL >>> SCL (3)
- SDA1 1 R388 2 SDA >>> SDA (3)
- ALERT#1 1 R389 2 ALERT# >>> ALERT# (3)
- SYNC1 1 R383 2 SYNC
- SFAULT1 1 R384 2 SFAULT
- FAULT1 1 R385 2 FAULT
- IMON1 1 R386 2 IMON
- SS1 1 R390 2 SS
- COMP1 1 R382 2 COMP
- PGOOD1 1 R374 2 PG00D (3)

Title		
NCP3286/96/97 EVB with IMP8 Socket		
Size	Document Number	Rev
	NCP3286	0
Date:	Friday, May 29, 2020	Sheet 2 of 4



"1&2" = Vin UVLO (Default)
 "2&3" = Controlled by Switch
 "Float" = External EN Signal

"1&2" = Switch Enable (Default)
 "2&3" = CNTL

Title		
NCP3286/96/97 EVB with IMVP8 Socket		
Size	Document Number	Rev
	NCP3286	0
Date:	Friday, May 29, 2020	Sheet 3 of 4

